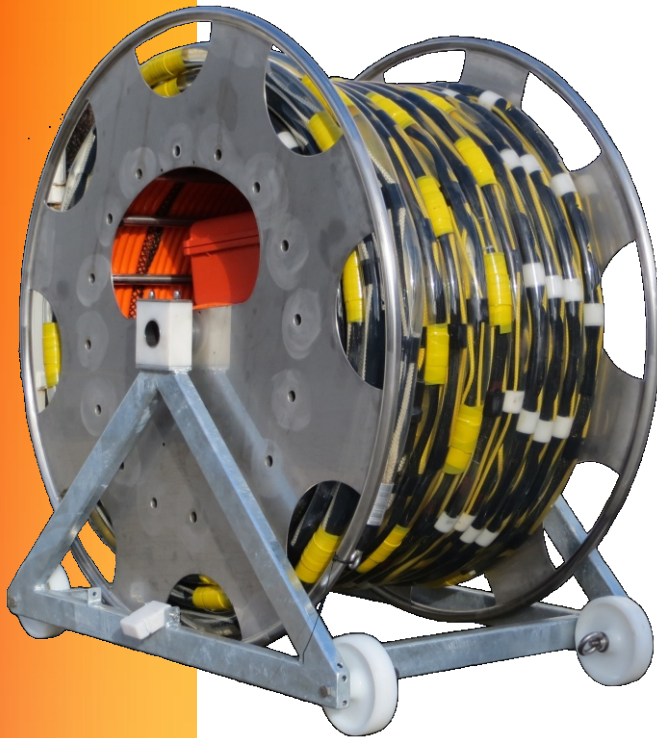




Geo-Sense Light-weight UHRS 24 - 48 Channel Streamers

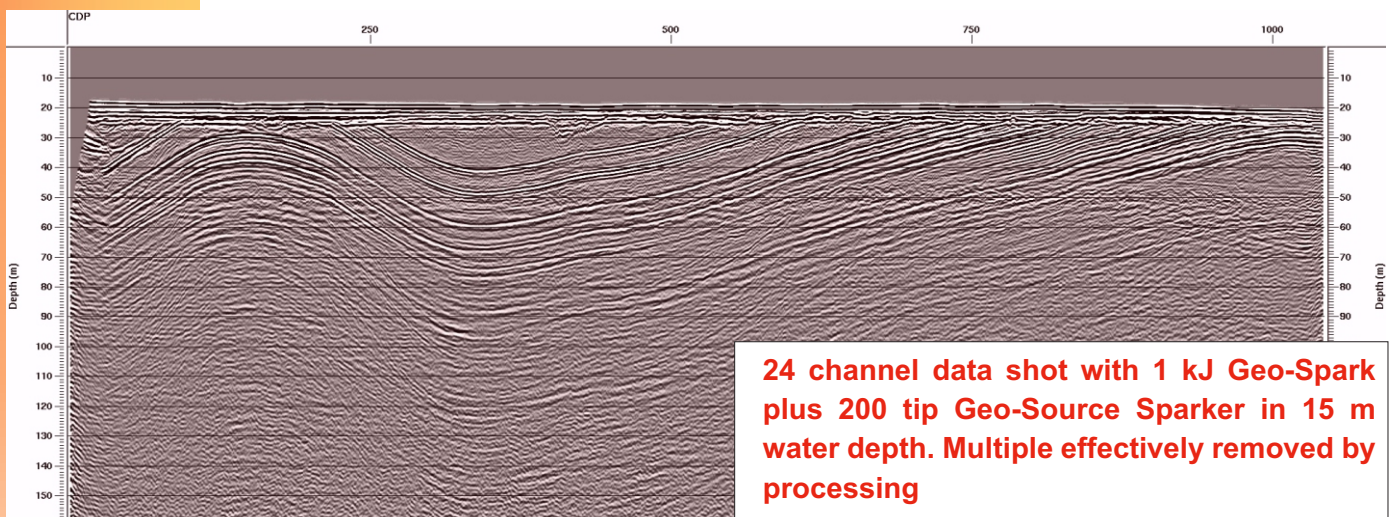


Main Characteristics

- Small diameter skin (41 mm), small bending radius, < 40 cm
- Very rugged harness made of Delrin spacers plus two 5 mm Kevlar ropes with > 3000 kg breaking strength
- Compact, stainless steel cable reel for easy and safe deployment
- Multi-Trace 24 A-D module integrated in cable reel, minimizing E-noise
- No connectors, all in one section
- Specially designed to capture the HF spectrum from the Geo-Source Sparkers
- Short 3-element active section of 50 cm minimizes spacial filtering
- Small group interval of 3,125 m allows detailed velocity analysis
- Classic analogue design, repairable in any cable shop

Streamer Outrigger

Too many times streamer performance is compromised by a bad towing configuration. The use of a 6-8 m outrigger is imperative to keep the streamer out of the prop wash





Geo-Sense Light-weight UHRS

Technical Specifications 24 - 48 channel model

STREAMER GEOMETRY (standard for 24 channels)

<i>Group Length,</i>	50 cm
<i>Group Spacing:</i>	3.125 m spacing between the groups <i>Note customized spacing available upon request</i>
<i>Deck Lead:</i>	25 m armoured LAN
<i>Tow lead:</i>	75.0 m
<i>Front-Stretch:</i>	12.5 m
<i>Total Active Length:</i>	75 m
<i>Tail-Stretch:</i>	12.5 m
<i>Total length streamer c/w tow lead</i>	75 tow lead + 12.5 + 75 + 12.5 = 175 m

STREAMER STRUCTURE

<i>Jacket size ID & OD:</i>	35 mm & 41,3 mm
<i>Jacket material:</i>	Unreinforced polyurethane, wall thickness 3.14 mm
<i>Connectors</i>	none, all in one length
<i>Spacing of spacers</i>	24 cm
<i>Stress members</i>	2 x 5 mm Kevlar rope, breaking strength >3000 kg
<i>Ballast fluid:</i>	Shell Sol T (standard)
<i>Buoyancy:</i>	Slightly positive, must be zero balanced using lead
<i>Wiring:</i>	32 twisted pair, super flexible, conductor diam 0,38mm
<i>Shielding</i>	100 % ground shielding all along

HYDROPHONE

<i>type;</i>	AQ 2000 or Sensor
<i>No of hydrophones per group:</i>	3 (three)
<i>Frequency response:</i>	1 Hz to 10,000 Hz \pm 3.0 dB
<i>Sensitivity:</i>	201 dBV re 1 uPa @ 20 C
<i>Sensitivity Change vs. Frequency:</i>	\pm 0.25 dB from 1 Hz to 1 kHz
<i>Sensitivity Change vs. Frequency:</i>	\pm 2.00 dB 1 kHz to 10 kHz
<i>Sensitivity Change vs. Temperature:</i>	< 0.03 dB per 1° C change
<i>Capacitance hydrophone:</i>	4.5 nF @ 20° C

PRE-AMP

<i>Type</i>	GEO, High imp, low noise, differential pre-amplifier
<i>Gain:</i>	26 dB
<i>Size:</i>	60 x 16 mm
<i>Gain:</i>	26 dB
<i>Ground reference:</i>	Single-ended
<i>Power :</i>	9 -12 V DC (polarity protected)
<i>High-pass:</i>	-3 dB : 3 Hz
<i>Low-pass:</i>	-3 dB :13 kHz
<i>ESD handling</i>	conform IEC 61000-4 norm

TOW -CABLE

<i>Length:</i>	Standard 75 m
<i>Diameter:</i>	18 mm
<i>Type:</i>	31 or 62 screened twisted pair extra flex 26 AWG
<i>Insulation:</i>	Polyurethane
<i>Strain member:</i>	Double reverse spiral Kevlar, 25 kg breaking strength
<i>Termination</i>	62 pin ITT D connector compatible with Multi-Trace 24

MANUAL CABLE REEL for 24 channel

Manual SS Cable reel with integrated Multi-Trace
foot print 120 x 70 cm, height 120 cm, weight 280 kg
LAN deck lead to acquisition PC

ELECTRIC WINCH for 48 channel

foot print 160 x 170 cm, height 180 cm, weight 480 kg
LAN deck lead to acquisition PC

Depth Control

Lead-in depth controller, AIS-GPS option

Phone: + 31 10 41 55 755
Fax: +31 10 41 55 351
info@geomarinesurveysystems.com
Website: www.geo-spark.com

GEO Marine Survey Systems b.v.
Sheffieldstraat 8
3047 AP Rotterdam
The Netherlands